

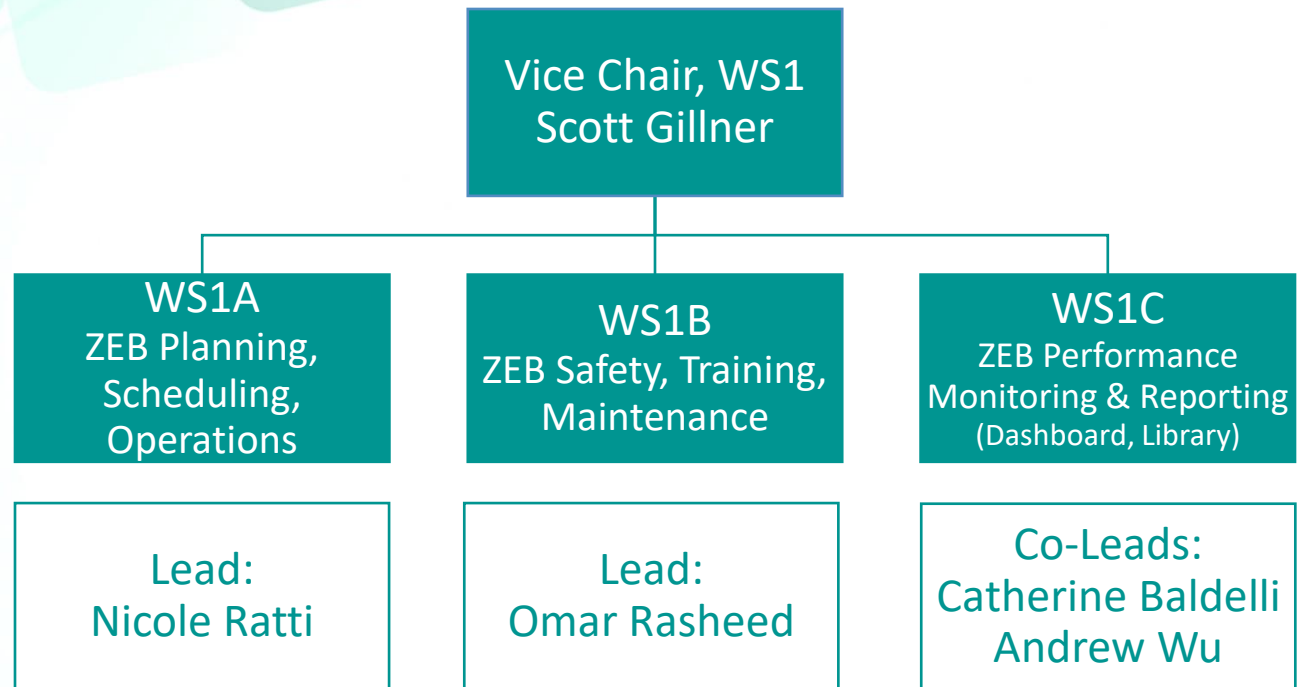
# OPTA ZEB Committee

## Work Stream 1 ZEB Operations & Maintenance

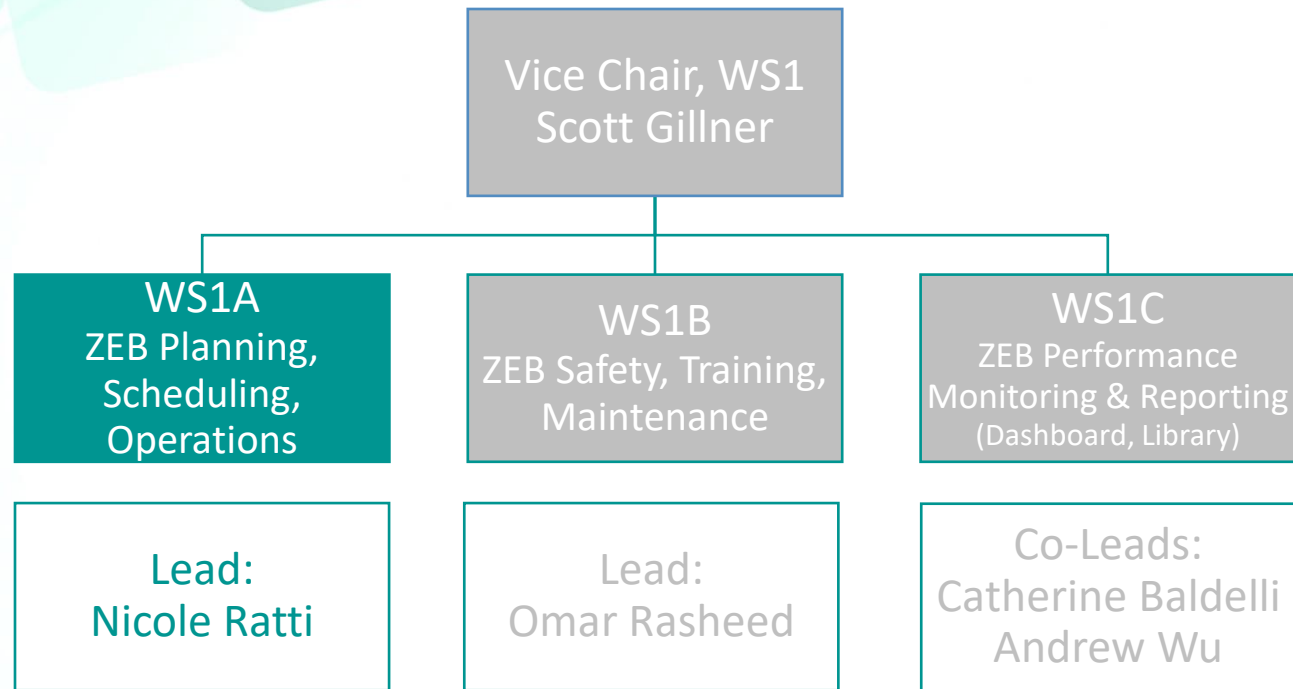
### 2023 DRAFT WORK PLAN

November 2, 2022

# Work Stream 1 > ZEB Operations & Maintenance



# WS1A > ZEB Planning, Scheduling, Operations



# WS1A > ZEB Planning, Scheduling, Operations

## WS1A-1 | Planning:

- ✓ Opportunity Chargers: cluster/optimization considerations
- ✓ Opportunity Chargers: public access accessibility and site constraints

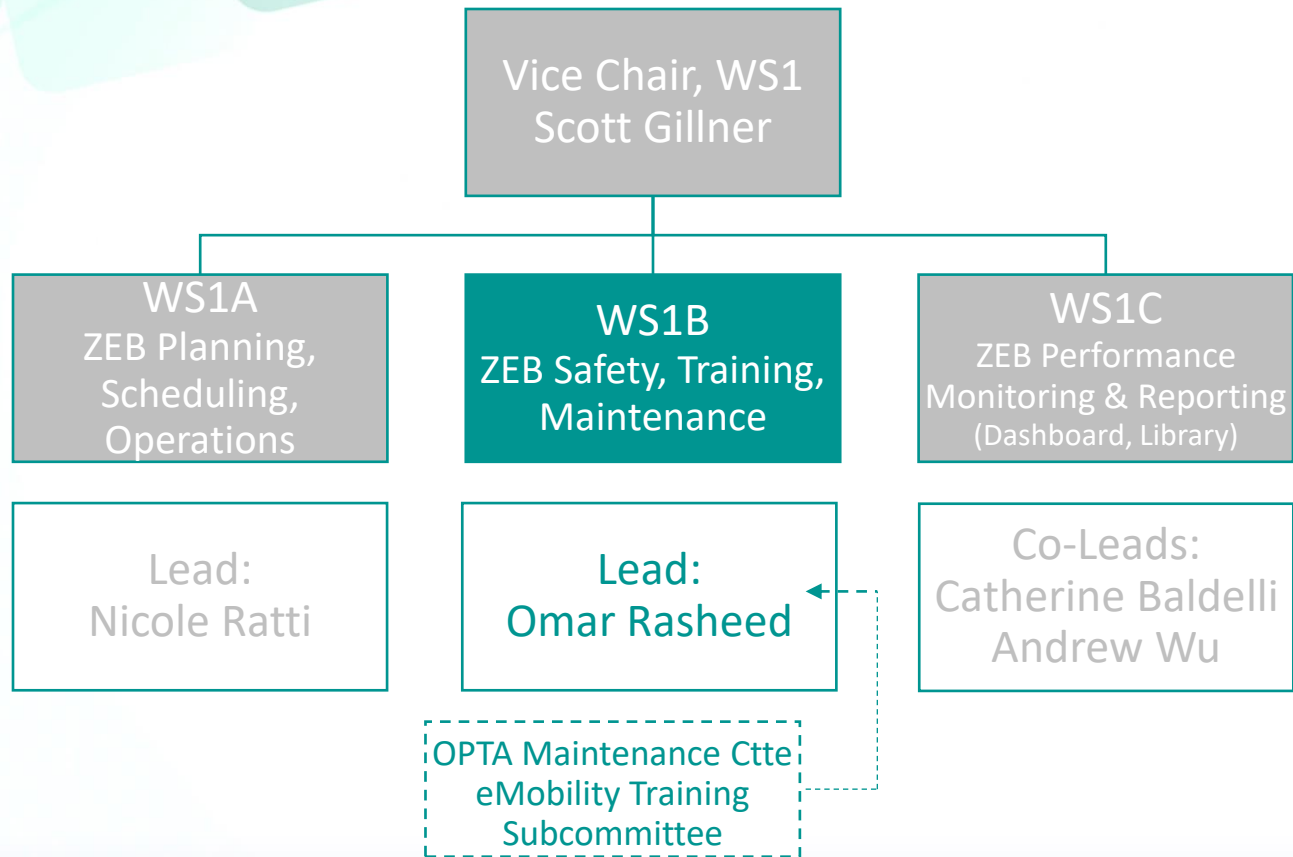
## WS1A-2 | Scheduling:

- ✓ Building on outcomes of the SPOT Report commissioned by EquiCharge on behalf of OPTA/CUTA, produce a scheduling impact assessment / guidelines for schedulers.

## WS1A-3 | Operations:

- ✓ Develop an operations change management plan
- ✓ Collaborate with WS2-Engineering to develop an operations-based Interoperability Testing, Commissioning, Final Acceptance & Sign-off Approvals Checklist

# WS1B > ZEB Safety, Training, Maintenance



# WS1B > ZEB Safety, Training, Maintenance

## WS1B-1 | ZEB Safety:

- ✓ EV Systems Electrical: **Arc Flash & High Voltage Work** (LOTO, SOPs, etc.)
- ✓ BEB **Thermal Events: Theory, Risk, Mitigation** (collaborate with WS2-Engineering for hierarchy controls/engineering solutions)
- ✓ BEB **EMI: Theory, Risk, Mitigation** (collaborate with WS2-Engineering)

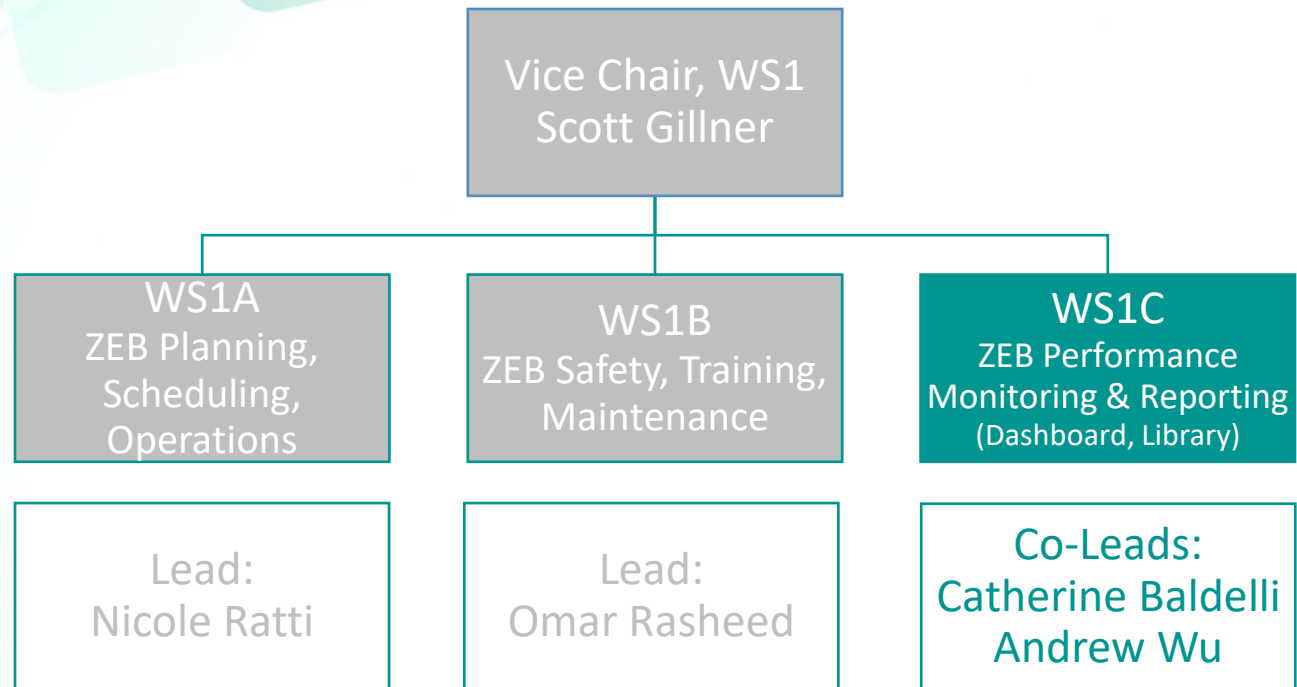
## WS1B-2 | ZEB Training:

- ✓ **Operator BEB Training Considerations & Guidelines**
- ✓ **Maintenance BEB Training Considerations & Guidelines**
- ✓ **ZEB academia and certifications / endorsements** (OPTA Maintenance Ctte; eMobility Training Subcommittee reporting in; STO)

## WS1B-3 | ZEB Maintenance:

- ✓ BEB **PM program elements**
- ✓ BEBB **maintenance specific KPIs** and comparative analysis (feeds WS1C)
- ✓ **HV System inspection requirements** (MTO NSCS11B)

# WS1C > ZEB Performance Reporting (Dashboard & Reporting)





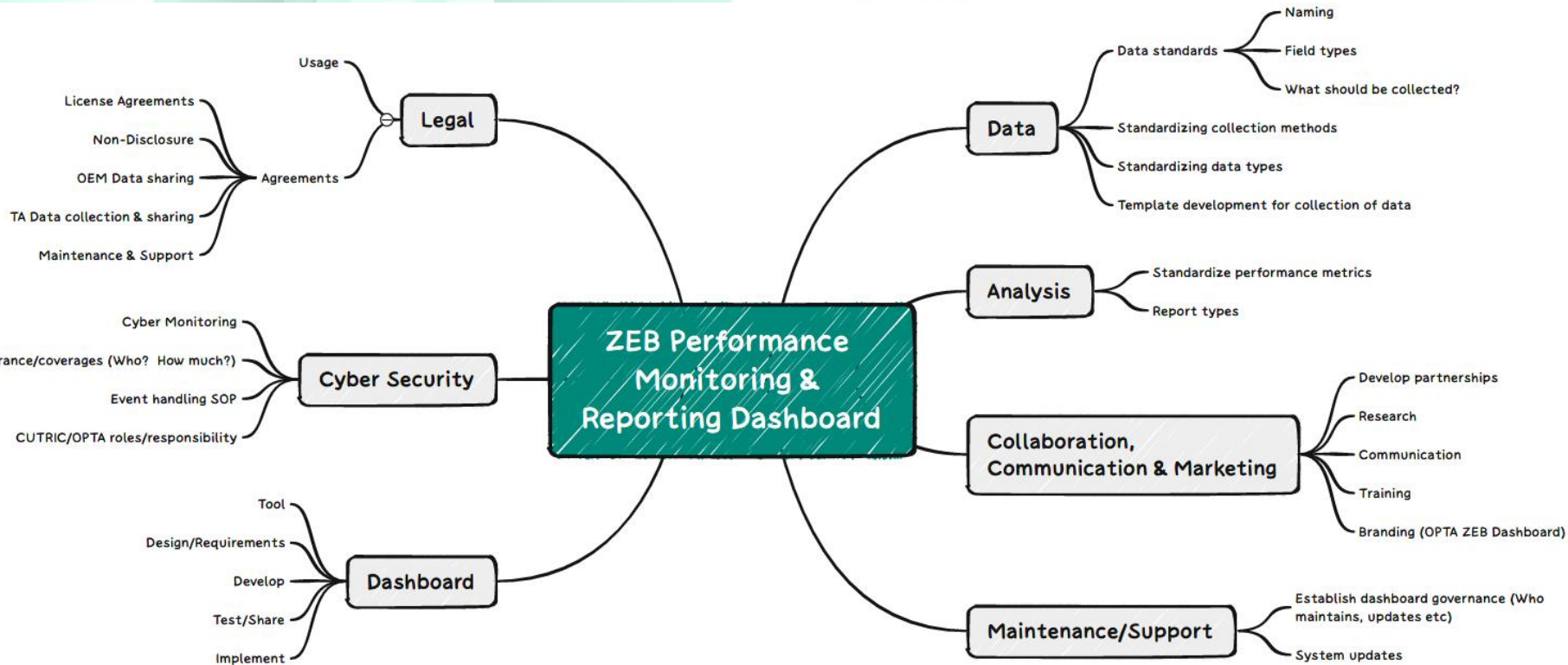
# WS1C > ZEB Performance Monitoring & Reporting (Dashboard, Library)

## WS1C-1 | ZEB Performance Monitoring:

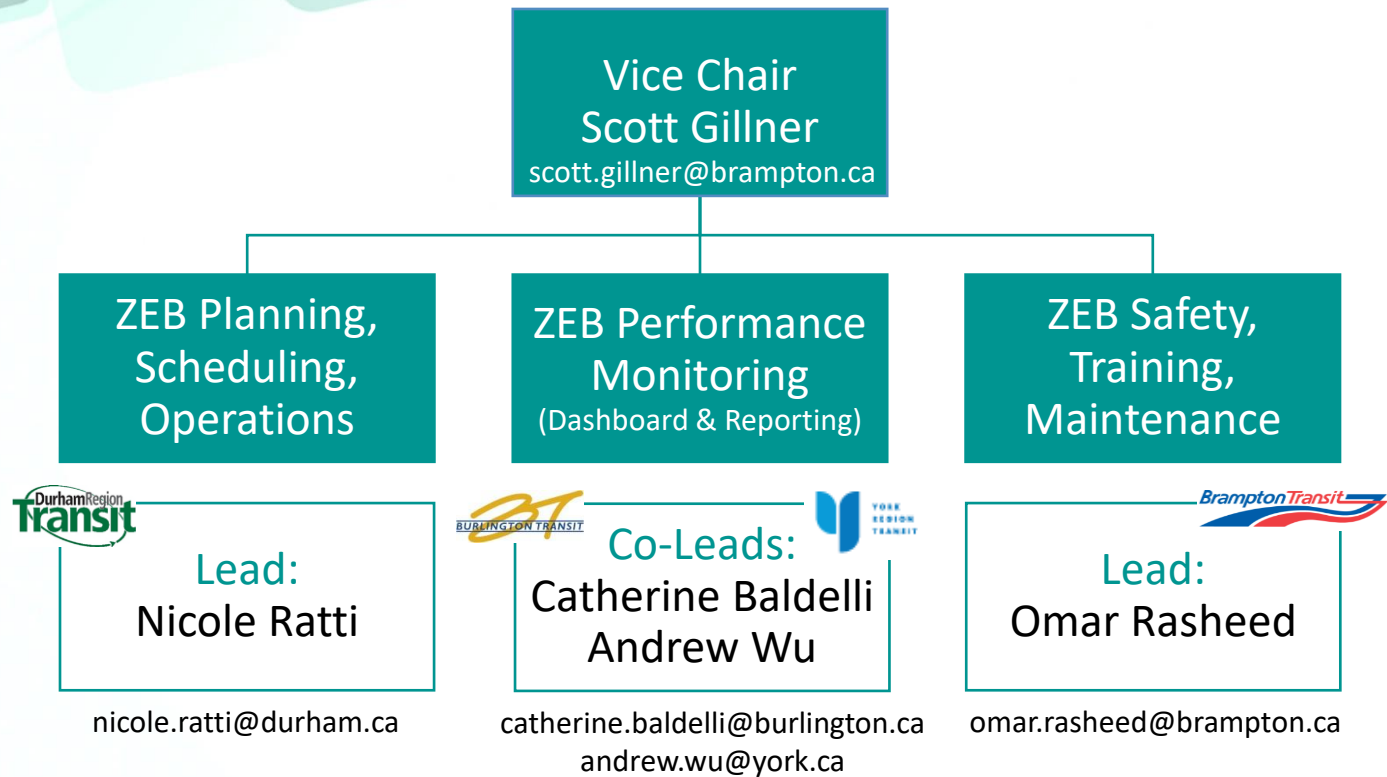
- ✓ OPTA ZEB [Performance Dashboard](#) (CUTRIC)
- ✓ OPTA BEB/FCEB [performance and maintenance KPIs and definitions](#) (source referencing and examples)
- ✓ Strong [collaboration](#) with other work streams including engineering and advocacy.
- ✓ Advocates [awareness and standardization](#) of provincial (MTO) and national measures (INFC/NRCan, CUTA, CUTRIC)



# WS1C > ZEB Performance Monitoring (Dashboard & Reporting)



# Work Stream 1 > Key Contacts



# Work Stream 1 > Next Steps

## 1. Scope Confirmation & Definition

- ✓ ZEB Ctte TOR
- ✓ Define crossovers and collaborations with other WS's
- ✓ High level scheduling and costing of the work
- ✓ Identify need for any additional funding or in-kind support from others

## 2. Regular meetings of the WS

- ✓ Confirm participation interest for the various sub streams and work
- ✓ Clarify confidentiality requirements and potential limitations around information sharing

## 3. Progress updates to future Committee meetings.